

**Scarborough Community of Toronto**  
**Chess News & Views**

Newsletter of / Le Journal de  
**Scarborough Chess Club**

**“ FRIENDLY Chess Since 1960 ”**

*ITEMS OF INTEREST TO BOTH MEMBERS & NON-MEMBERS*

**Issue # 17 – May 1, 2006**

Do You Know ? / Savez-Vous ?

**FIDE Women’s World Chess Championship – Discrimination ??**

The 2006 Women’s World Chess Championship concluded on March 27. It consisted of 64 players and was a knockout tournament.

It is interesting that for the 2005 World Chess Championship, the knockout format was abandoned, and an 8-player round-robin was played. And for the 2007 FIDE WCC, the knockout format was reshaped into the 2005 FIDE World Cup, and became only the first part of a 3-part cycle for the 2007 WCC. Winners of the knockout only went into the second phase of the championship, the 8 Candidates matches. And the 2007 WCC will again be an 8-player round-robin.

So if the knockout tournament is downgraded in the WCC, why is it still the critical tournament format for the Women’s WCC ? The general criticism of the knockout format for the championship was that it was too short a match ( 2 games ), and introduced an almost lottery kind of effect in the final outcome. This could easily be seen in the 2006 Women’s WCC. By the end of only the third round, 11 of the top 13 rated players had been eliminated !

Isn’t it time FIDE treated the Women’s WCC with the same respect as the WCC ? Surely for the next Women’s WCC, there should be a 3 phase tournament, with a knockout as the first phase, qualifying players to a set of 4 Candidates Matches, where one group would be from the knockout, and one group by rating. Then a 4-player double round-robin could be the final phase, consisting of the 2006 Women’s World Champion, the runner-up, and 2 from the Candidates Matches. This would keep the Women’s WCC

---

SCTCN&V Website : <http://scarboroughchess.webhop.net>  
SCC e – mail : [scarboro@idirect.ca](mailto:scarboro@idirect.ca) SCC Website : <http://www.ScarboroughChessClub.ca>  
Jack Goodlad Community Ctre, 929 Kennedy Road  
( ½ way between Eglinton Ave. and Lawrence Ave. )

on a par with the WCC, and end the discrimination now in place for women's chess.

[ Note : This article was formally presented to the CFC FIDE Representative, Dr. Nathan Divinsky on Sunday, April 23. He was asked for his comments on the issue, and requested to have Canada take the initiative at the upcoming FIDE meeting in May in Turin, Italy to have the Women's WCC format changed. On April 25, Dr. Divinsky replied that he would raise the issue in Turin. ]

### **European Individual Championships**

This tournament was played in Kusadasi, Turkey from April 4 – 17. It attracted 85 GMs (20 over 2600) and 37 IMs from 36 countries in the men's section, and 81 titled players from 27 countries in the women's section. A total of 16 players from the general section ( men and women ) and 12 from the women's section qualified for the first cycle of the 2009 World Championship, the 2007 FIDE World Cup.

The top 16 in the general section were :

| Rank | Ti. | Name                   | FED | Rtg  | Pts.       | TB1  | TB2  | Perf |
|------|-----|------------------------|-----|------|------------|------|------|------|
| 1    | GM  | Kozul Zdenko           | CRO | 2606 | <b>8.5</b> | 59.0 | 71.5 | 2791 |
| 2    | GM  | Ivanchuk Vassily       | UKR | 2731 | <b>8.0</b> | 59.0 | 73.0 | 2742 |
| 3    | GM  | Georgiev Kiril         | BUL | 2677 | <b>7.5</b> | 61.5 | 75.5 | 2715 |
| 4    | GM  | Izoria Zviad           | GEO | 2647 | <b>7.5</b> | 59.5 | 73.0 | 2695 |
| 5    | GM  | Macieja Bartlomiej     | POL | 2584 | <b>7.5</b> | 59.0 | 70.5 | 2699 |
| 6    | GM  | Nikolic Predrag        | BIH | 2596 | <b>7.5</b> | 57.0 | 70.0 | 2695 |
| 7    | GM  | Inarkiev Ernesto       | RUS | 2602 | <b>7.5</b> | 56.5 | 69.5 | 2701 |
| 8    | GM  | Naiditsch Arkadij      | GER | 2664 | <b>7.5</b> | 56.0 | 70.0 | 2692 |
| 9    | GM  | Belov Vladimir         | RUS | 2599 | <b>7.5</b> | 55.5 | 68.5 | 2691 |
| 10   | GM  | Baramidze David        | GER | 2545 | <b>7.5</b> | 53.5 | 64.5 | 2662 |
| 11   | GM  | Jobava Baadur          | GEO | 2646 | <b>7.0</b> | 58.0 | 70.5 | 2660 |
| 12   | GM  | Miroshnichenko Evgenij | UKR | 2608 | <b>7.0</b> | 58.0 | 70.5 | 2637 |
| 13   | GM  | Mamedov Rauf           | AZE | 2538 | <b>7.0</b> | 58.0 | 66.5 | 2597 |
| 14   | GM  | Nijboer Friso          | NED | 2584 | <b>7.0</b> | 57.5 | 69.5 | 2653 |
| 15   | GM  | Fressinet Laurent      | FRA | 2633 | <b>7.0</b> | 57.0 | 70.0 | 2653 |
| 16   | GM  | Palac Mladen           | CRO | 2561 | <b>7.0</b> | 57.0 | 69.0 | 2673 |

The 12 qualifiers from the Women's Section were :

| Rank | Title | Name                 | FED | Rtg  | Pts.       | TB1  | TB2  | Perf |
|------|-------|----------------------|-----|------|------------|------|------|------|
| 1    | WGM   | Atalik Ekaterina     | TUR | 2393 | <b>8.5</b> | 56.5 | 69.0 | 2549 |
| 2    | IM    | Bosboom Lanchava Tea | NED | 2380 | <b>8.0</b> | 59.5 | 72.5 | 2525 |
| 3    | WGM   | Zhukova Natalia      | UKR | 2425 | <b>7.5</b> | 58.0 | 71.5 | 2457 |
| 4    | GM    | Stefanova Antoaneta  | BUL | 2502 | <b>7.5</b> | 56.5 | 70.0 | 2464 |

|    |     |                 |     |      |            |      |      |      |
|----|-----|-----------------|-----|------|------------|------|------|------|
| 5  | WIM | Gvetadze Sopio  | GEO | 2361 | <b>7.5</b> | 55.5 | 67.5 | 2488 |
| 6  | WGM | Muzychuk Anna   | SLO | 2418 | <b>7.5</b> | 55.0 | 67.5 | 2487 |
| 7  | IM  | Dembo Yelena    | GRE | 2464 | <b>7.5</b> | 54.0 | 67.0 | 2480 |
| 8  | IM  | Gaponenko Inna  | UKR | 2430 | <b>7.5</b> | 53.5 | 65.5 | 2464 |
| 9  | WGM | Kadimova Ilaha  | AZE | 2310 | <b>7.5</b> | 51.5 | 62.5 | 2423 |
| 10 | IM  | Mkrtchian Lilit | ARM | 2453 | <b>7.5</b> | 51.0 | 62.0 | 2391 |
| 11 | IM  | Sedina Elena    | ITA | 2373 | <b>7.5</b> | 50.0 | 61.5 | 2373 |
| 12 | WGM | Ushenina Anna   | UKR | 2397 | <b>7.0</b> | 56.0 | 68.5 | 2418 |

### SCC Early Spring Swiss Continues

This one-section, 6 round swiss started on Thursday, March 16, and attracted 26 players. The winner, with 5 pts., was Bryan Lamb, the highest rated player in the club ( 2105 ), and last year's club champion, who suffered only one defeat, to Rick Garel in Rd. 5. In 2<sup>nd</sup>/4<sup>th</sup> with 4.5 pts. were: Rick Garel, who had been the leader going into the final round; Jim Paterson, one of this year's club co-champions, who defeated Garel in the last round; and John Hall, 2<sup>nd</sup> highest rated player in the club ( 2062 ).

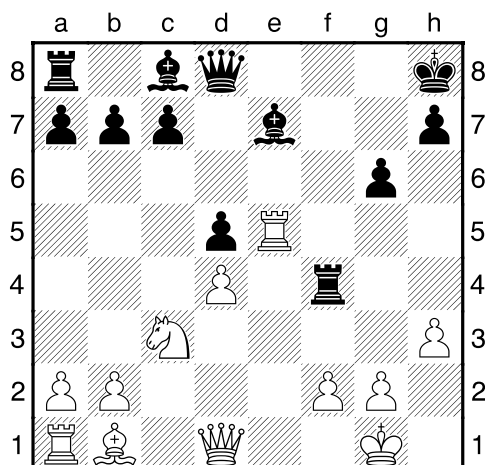
In Rd. 6, to win the tournament, Bryan met and defeated one of this year's co-champions, Alex Rapoport. Here is their game ( Annotations by Bob Armstrong, using Fritz ) :

#### **Lamb, B (2105) – Rapoport, A (1946) [A18]**

SCC Early Spring Swiss SCC, Toronto (6), 20.04.2006

**1.c4 Nf6 2.Nc3 e6 3.e4 Nc6 4.Nf3 d5?± [4...e5=] 5.cxd5 exd5 6.e5 Ne4 7.Bd3?=[7.Bb5 Qd7 8.0-0 a6 9.Ba4 Nc5 10.d4 Nxa4 11.Qxa4 Bb4±] 7...f5?± [7...Nc5 8.Bb5 d4 9.Ne2 Bd7=] 8.exf6?=[8.0-0 Be7 9.Bb5 0-0 10.Re1 Na5±] 8...Nxf6 9.0-0 Be7 10.Re1 0-0 11.h3 Nh5?± [11...a6 12.a3 Qd6 13.b4 Bd7=] 12.Bb1 Kh8?± [12...Nf4 13.d4 Bg5 14.Be3 Bh6 15.Bxf4 Bxf4±] 13.d4 Nf4 14.Ne5 Nxe5 15.Rxe5 g6?+- this error should get Alex into trouble; it exposes B1's K to attack [15...Bd6 16.Bxf4 Rxf4 17.Rh5 h6 18.Nxd5 Rf7±] 16.Bxf4 [16.Qe1?? Ne6 17.Bh6 Bd6 18.Bxf8 Qxf8 19.Rxe6 Bxe6 20.Nb5 (20.Qxe6?? Re8+) 20...Bf5=] 16...Rxf4**

Position after 16....Rxf4



a b c d e f g h

**17.Qe2??±** Bryan lets Alex off the hook. [17.Nxd5 Bd6 18.Bxg6! Bxe5 19.Qh5 Rf7 20.Bxf7 Bg7 21.Re1 Bd7 22.Ne7 h6 23.Qg6 Be8 24.Re6 Qd7+-] **17...Bxh3??+-** Alex hallucinates and makes a losing sac [17...Rf7 18.Rxd5 Bd6 19.Bc2 Rg7±] **18.Rxe7 Bg4?+-** Alex misses the mate threat [Alex would have to give up more material to avoid mate now 18...Qd6 19.gxh3 Raf8 20.Qe5+ Qxe5 21.dxe5 c6 22.Rxb7 Rxf2 23.Bd3 R2f3 24.Rf1 Kg8 25.Rxf3 Rxf3 26.e6! Rxd3 27.Ne4! dxe4 28.Rb8+ Kg7 29.e7 Rd1+ 30.Kf2 Rd2+ 31.Ke1 Rxb2 32.e8Q+-] **19.Qe5++-** and mate follows **1-0**

In another Rd. 6 game, down in the middle of the draw, your intrepid editor, Bob Armstrong, went down to defeat in a hard-fought game with Joe Bellomo. Here is that game ( Annotations by Bob Armstrong, using Fritz ):

### **Armstrong, R (1673) – BELLOMO, J (1700) [E14]**

SCC Early Spring Swiss SCC, Toronto (6), 20.04.2006

**1.d4 Nf6 2.c4 e6 3.Nf3 b6 4.e3 Bb7 5.Bd3 Be7 6.0-0 0-0 7.Nc3 d5 8.b3 dxc4 9.Bxc4 Nbd7 10.Bb2** [10.Ng5? Nd5 11.Nge4 f5 12.Bxd5 exd5 13.Ng3 Bb4 14.Bd2 Bd6±] **10...c5 11.Qe2** [11.d5 exd5 12.Nxd5 a6 13.Rc1 Re8 14.Nxe7+ Qxe7=] **11...cxd4 12.Nxd4** [12.exd4 a6 13.a4 Qc7=] **12...Ne5 13.Rfd1** According to the chess database of ChessBase, this is a novelty. The previously played move was 13. Ba6. [13.Ba6 Qc8 14.Bxb7 Qxb7 15.f4 Nc6=; 13.Bxe6! fxe6 14.Nxe6 Qd7 15.Nxf8 Rxf8=] **13...Qc8 14.Bb5 a6 15.Bd3??±** [15.f4 Ned7 16.Bd3 Qb8 17.Rac1 Rd8=] **15...Nxd3 16.Rxd3 Bc5??±** [16...e5 17.Nc2 Qf5 18.f3 Rad8 19.e4 Qg5±] **17.Rad1??±** [17.Na4 e5 18.Rc1 Qc7 19.Nc2 Rad8±] **17...e5 18.Nc2 Qc6 19.f3 e4?±** [19...Rac8±] **20.Nxe4 Nxe4 21.fxe4 Qxe4 22.Bd4??±** [22.b4 Be7 23.Rd4 Qe5 24.Rd7 Qxb2 25.Rxb7 Bxb4 26.Rxb6 a5=] **22...a5?±** [22...Rac8 23.Bxc5 Rxc5 24.R1d2 Qe5±] **23.Bxc5 bxc5 24.Rd7** [24.Qf2? a4 25.b4 Qc4 26.bxc5 Be4 27.R3d2 Qxa2±] **24...Ba6** [24...a4 25.b4 Bc8 26.R7d5 Re8=] **25.Qd2 Rae8??±** for the first time I get a clear advantage [25...a4 26.Qc3 axb3 27.axb3 Bb5 28.R7d6 Rfc8=] **26.Ra7??±** but I fail to hold it [26.Rd5 Rc8 27.Qxa5 c4 28.Qxa6 cxb3 29.Ne1 Qxe3+ 30.Kf1 Rc2 31.Rf5 Rxa2 32.Qd3 Qe6±] **26...Re6 27.Rd7** [27.Rc7?? Re5 28.Qc3 Rg5 29.Rd2 Qf3 30.h4 Qf1+ 31.Kh2 Rh5 32.Qa1 Qf5 33.g3 Bc8 34.Kg1 Qg4 35.e4 Rxh4 36.Qe5 Rh3 37.Kf2 Rh2+ 38.Ke3 Rxd2 39.Kxd2 Rd8+ 40.Kc1 a4±] **27...Rfe8 28.Rd8??±** [28.Rc7?? Re5 29.Qf2 Rf5 30.Qd2 Bb5 31.a3 Qe5 32.Ra7 Bc6 33.e4 Bxe4 34.Ne3 Rh5 35.Ng4 Qe6 36.Re1 h6 37.Nf2 Re5±; 28.Rd5 Bb7 29.Rxc5 Rg6 30.Ne1 Rd6 31.Qxd6 Qxe3+ 32.Kf1 Qe2+ 33.Kg1 Qe3+=] **28...Bb7 29.Rxe8+ Rxe8 30.Qf2 f6 31.Rd7 Qc6?±** [31...Bc6 32.Rc7 Rd8 33.h4 a4 34.Kh2 axb3 35.axb3 Rd7 36.Rc8+ Kf7±] **32.Qd2 h6 33.Rd6??±** [33.Ne1 Kh8=] **33...Qc7?±** [33...Qe4±] **34.Rd7 Qb6 35.Qf2 Bc8 36.Rd5??±** [36.Rd1=] **36...Be6** [36...a4 37.bxa4 Qb1+ 38.Ne1 Qc1 39.Qd2 Qxd2 40.Rxd2 Rxe3 41.Kf2 Re8±] **37.Rd1 Qc6 38.Qd2** [38.Qf4 Bd5 39.Qg4 a4 40.bxa4 Be4 41.Rd7 g6 42.Rd2 Qxa4 43.Ne1 Qc4±] **38...Qe4?±** [38...a4±] **39.Kf2??±** this is a bad idea [39.Qd3 Qxd3 40.Rxd3 Bf5 41.Rc3 Rd8 42.Rxc5 Rd1+ 43.Ne1 Bb1 44.Kf2 Rd2+ 45.Kf3 Bxa2 46.Rb5 Kf7=] **39...Bf7 40.Qd3 Qh4+ 41.Kg1 Qh5??±** [41...a4 42.Qc3 axb3 43.axb3 Qe4 44.Rd2 Kh7±] **42.Rc1 Bg6 43.Qd2** [43.Qc4+ Kh8 44.Ne1 Rxe3 45.Nf3 Kh7±] **43...Qg5 44.Kf2??±** and it's still a bad idea [44.Qc3±] **44...Re5??±** although Joe has had the edge for much of the game, it is now equal. I had 12 min. left, and Joe had 15 min.. [44...Bxc2 45.Rxc2 Rxe3 46.Qxe3 Qf5+ 47.Kg3 Qxc2 48.Qe6+ Kh7 49.Qe1 a4 50.bxa4 Qxa4±] **45.Na3??+** aware of the time pressure ( and Joe was playing faster than me ), I fail in my analysis, and make a fatal error, taking my N the wrong way, hoping to put it on c4 ( but it never gets there ). [45.Ne1 Be4 46.Rc4 Rf5+ 47.Kg1 Rd5 48.Qc1 Re5=] **45...Be4 46.Kg1?+** and this seals my fate ! [46.g3 Qf5+ 47.Ke1 Qf3 48.Qf2 Qh1+ 49.Qf1 Qxh2 50.Qf2 Qh1+ 51.Qf1 Rh5-] **46...Bxg2!** I resigned; my position is lost. The game could have continued **47.Qf2** [47.Qxg2?? Qxe3+ 48.Kh1 Qxc1+ 49.Qg1 Qd2 50.h4 Re2 51.Qf1 Qd5+ 52.Kg1 Qd4+ 53.Kh1 Qxh4+ 54.Qh3 Qxh3+ 55.Kg1 Qg2#] **47...Bh3+ 48.Qg3 Qh5 49.Kf2 Rg5**

50.e4 [50.Qb8+ Kh7 51.Rg1 Rxd1 52.Kxd1 Qf3+ and mate follows] 50...Rxd3 51.hxd3 Bg4+ and I've lost my Q for a R. 0-1

### SCC Starts New Swiss

On Thursday, April 27, SCC started the Spring Swiss, a 5 round, one-section swiss. 24 players registered. If you are interested in playing, you can still get into the tournament – a bye will be given for rd. 1. Come out and play some friendly, but competitive, over-the-board CFC-rated chess.

### GTCL League – Under 2000

This year the league has been divided into two levels, Over 2000 and Under 2000. SCC has a team in the Under 2000 section, along with Brampton, Mississauga, Chess Academy of Canada, Bayview Games Club, BOTSBS ( Conrad Ho ), and Oriole 1 & 2. A team is made up of 4 players.


On Thursday, April 20, SCC played BOTSBS ( Conrad Ho ) at the SCC – to that point they had 0 wins, 2 ties and 3 losses. The result was 0-4 for BOTSBS :

| <u>SCC</u>    |       | <u>BOTSBS</u> |
|---------------|-------|---------------|
| Andrew Philip | 0 – 1 | Conrad Ho     |
| Gord Blackman | 0 – 1 | Brendan Fan   |
| Maurice Smith | 0 – 1 | Alan Ang      |
| Steve Karpik  | 0 – 1 | Alfonso Cheng |

The result was not completely unexpected, as the BOTSBS team was rated an average of 217 points higher per board !

### Ontario Chess Challenge Championships

The Chess 'N Math organization organizes regional, provincial and national youth championships by grade, from 1 to 12. The Ontario champions were determined the weekend of April 22/23. They are :

|  | Ontario            |
|---|--------------------|
| Grade 1   | Yinshi Li          |
| Grade 2   | Steven Leu         |
| Grade 3   | Christopher Knox   |
| Grade 4   | Joey Qin           |
| Grade 5   | Aquino Inigo       |
| Grade 6   | Arthur Calugar     |
| Grade 7   | Lloyd Mai          |
| Grade 8   | Shiyam Thavandiran |
| Grade 9   | Kevin Chung        |

|          |                |
|----------|----------------|
| Grade 10 | Zhe Quan       |
| Grade 11 | David Peng     |
| Grade 12 | Jonathan Tayar |

### **Toronto Open – Report**

This 6 round swiss was held at the Bayview Games Club, 1681 Bayview Avenue, on April 15 – 17. It attracted 37 players. The winners of the various sections were:

Open Section: 1<sup>st</sup> – Nikolay Noritsyn – 5.5 pts.  
2<sup>nd</sup> – IM Leonid Gerzhoy – 4.5 pts. ( who was defeated by Noritsyn in Rd. 5 )  
3<sup>rd</sup>/7<sup>th</sup> – Dale McTavish – 4 pts. ( gains entry to the Can. Closed as best U 2200 )

Liam Henry – 4 pts.  
Hazel Smith – 4 pts.  
Sami Ademi – 4 pts.  
Dave Southam – 4 pts.

A Section: 1<sup>st</sup>/2<sup>nd</sup> - Morgon Mills – 4 pts.  
Lyndon Dizon – 4 pts

B Section: 1<sup>st</sup>/2<sup>nd</sup> – Harris Kaufman – 3.5 pts.  
John Chidley-Hill – 3.5 pts.

C Section: 1<sup>st</sup>/2<sup>nd</sup> – Pino Verde – 3 pts.  
Richard Laporte – 3 pts.

D Section : 1<sup>st</sup>/2<sup>nd</sup> – Alexandru Florea – 3 pts.  
Kelvin Xu – 3pts.

---

A - Members/ non-members may contact Bob Armstrong, ed. , directly, at [bobarm@sympatico.ca](mailto:bobarm@sympatico.ca) or through SCC e-mail, to :

1. Be added to the free e-mail list; 2. Submit content ( fact, opinion, criticism, recommendations! ).
- B – An item in any language may be submitted for publication, if accompanied by an English translation.  
C – The opinions expressed here are those of the editor, and not necessarily those of the Scarborough CC.  
D - To review this newsletter after it has been deleted, or any of the archived newsletters back one year, visit our own SCTCN&V official website at : <http://scarboroughchess.webhop.net>.  
E – Please notify us if you wish to be removed from the free subscription list